

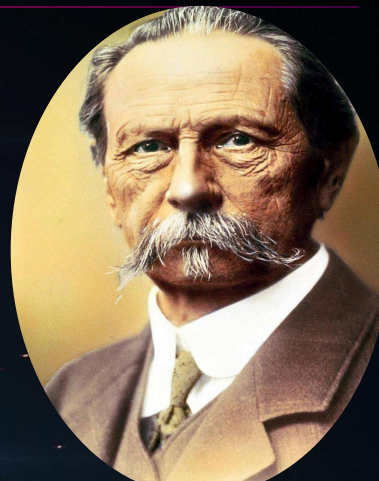
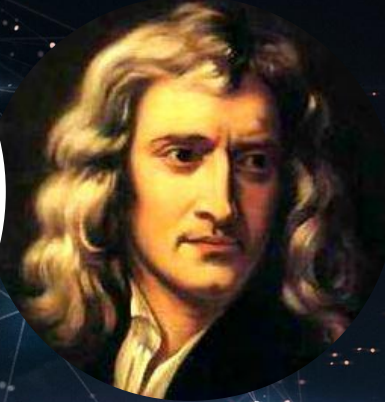
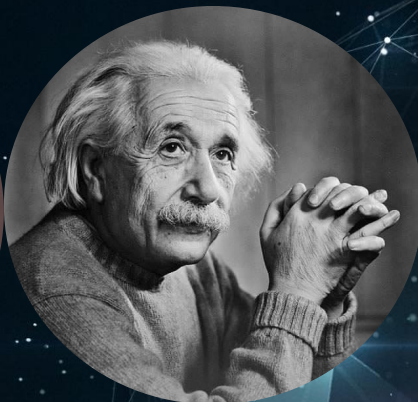
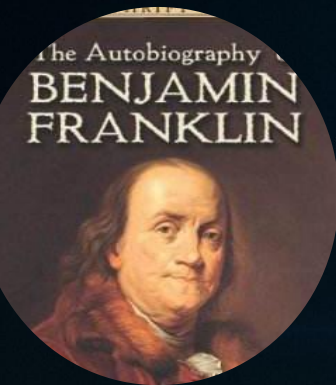
Module 5 Unit 1

Great Scientists



THEY CREATE OUR COLORFUL AND COMFORTABLE LIFE.

潮恩教育
www.sunedu.com



make a difference

make every effort

make great contributions



STAGES IN SCIENTIFIC RESEARCH



Rigorous(严谨的) scientific research stages are essential to prove a new idea.

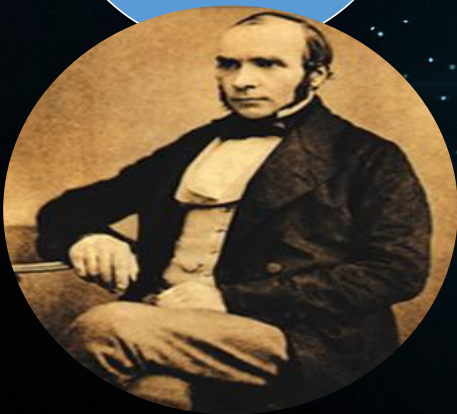
Draw a conclusion	Think of a method	Find supporting evidence
Collect results	Make a question	Find a problem
Analyse the results	Repeat if necessary	



Predict the content from the title

John Snow defeats “King cholera”

Who?



How?

**Scientific
research
stages**

What?





Para1: Find a problem: What causes cholera?

Adjectives(形容词)

famous/ well-known
expert/ professional
kind-hearted
considerate

Adjectives

deadly
incurable
terrible
infectious
(传染性的)

VS

Battle

challenge

John Snow

“King cholera”



Para2: Make a question: Which theory is correct?

溯恩教育
www.sunedu.com

Two theories

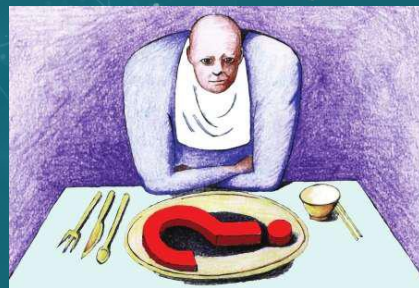
The first



It suggested that cholera multiplied in the air.



The second



It suggested that people absorbed this disease into their bodies with their meals.

As a scientist, it is important to keep curious, critical(批判性的) and sensible(有判断力的).



Para3: Think of a method: Collect data on the disease

John Snow **suspected that the second theory was correct** but he **needed evidence**. So when another outbreak hit London in 1854, he was ready to **begin his enquiry**. As the disease spread quickly through poor neighbourhoods, he began to **gather information**. In two particular streets, the cholera outbreak was so severe that more than **500 people** died in ten days. He **was** **determined to** find out why. **where the victims lived**
the number of the dead victims



Para4: Collect results: Mark information on a map

**Where did many deaths happen
and where did no death happen?**

There were many deaths here. ★★ ★

There was no death here.

**People working here hadn't drunk the water
from the pump.**

**Conclusion: It seemed that the water
was to blame.**



Para5: Analyse results: Analyse the source of the water

Q1: Where did the water come from?

It came from the river polluted by the dirty water from London.

Q2: What measures did John Snow take and what about the result?

Remove the handle from the pump.



The disease slowed down.

Cholera was spread by germs and not in a cloud of gas.



Para6: Find supporting evidence: Find other evidence

Q: What is the supporting evidence?

Two other deaths in another part of London that were linked to the Broad Street outbreak.

To prove a new idea or suspicion, enough supporting evidence is strongly required.

Thorough(缜密的) observation and analysis are necessary.



The cause of cholera
and suggestions

Para 6&7: Draw a conclusion:

Q1: What conclusion did John Snow draw with the extra evidence?

the cause of cholera
Polluted water carried the germs.
with certainty

Q2: What did John Snow suggest after that?

The source of all the water supplies be examined.
The water companies were instructed not to
expose people to polluted water



Para 7: The final result

Finally “King Cholera” was defeated.

John Snow

Battle

“King cholera”

John Snow succeeded.

Discussion:

What made John Snow successful and great?

- Considerate and courageous(勇敢的) qualities
- Rigorous(严谨的) scientific research stages
- Thorough(缜密的) observation and analysis
- Persistent(坚持不懈的) scientific spirit

Equip yourself with valuable scientific questions, persistent scientific spirit and effective methods, and some day you will make it!





What makes the passage logical?

Structure

Writing style

**scientific
research stages**

scientific report



Homework: Writing style

Writing style	scientific report
Language	Formal language with few adjectives
Speech	
Emotional or not	
Main character	
Factual or not	
Structure	
Tense	

“Genius is
one percent
inspiration,
99 percent
perspiration.”



— Thomas Edison

The background of the slide is a sunset sky with orange and yellow hues near the horizon and darker purple tones above. Two silhouettes of people are jumping joyfully against the bright horizon. A large heart shape is formed by glowing white light trails that loop around the central text. The text "THANKS FOR YOUR ATTENTION" is written in a bold, white, sans-serif font, centered on the slide. The top and bottom of the slide feature a dark blue background with a network of white dots and lines, resembling a constellation or a digital network.

**THANKS FOR YOUR
ATTENTION**