

## Reading: How Life Began on the Earth

Teaching Objects: *During the class, students should be able to*

1. Understand the meaning of the reading passage.
2. Practice the following reading skills: skimming and scanning
3. Get the detailed information about how life developed on the earth
4. Practice skills of analyzing things in scientific mind
5. Retell the story by completing the summary

Focal points & Difficult points:


1. Get the detailed information about how life developed on the earth
2. Practice skills of analyzing things in scientific mind





**KNOWN UNIVERSE**

# Unit 4 Astronomy

**The**  **of the stars**

# Quiz

- 1 ✓ The earth moves around the sun.
- ✗ It takes the earth one **year** to move around the sun.
- ✗ The earth is **one of the 8 planets** moving around the sun.
- ✗ There **is no water on the** moon now.
- 5 ✓ The earth is the only planet in the solar system which has living creatures.

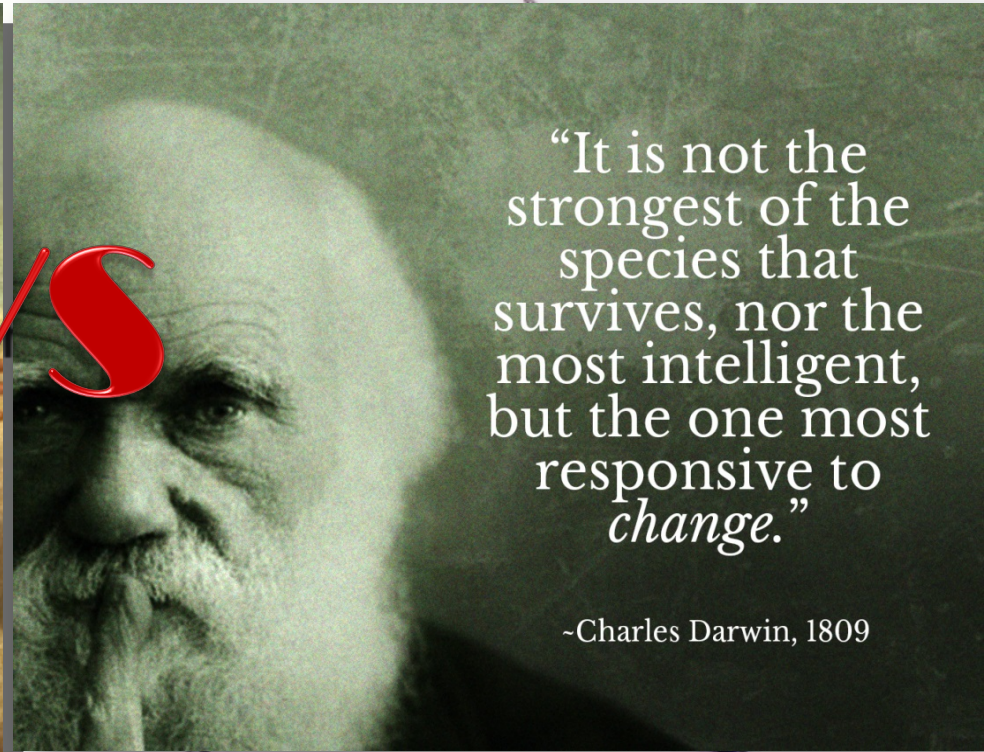


**The earth is the only planet  
in the solar system which  
has living creatures.**

# HOW LIFE BEGAN ON THE EARTH



VS



“It is not the strongest of the species that survives, nor the most intelligent, but the one most responsive to *change*.”

-Charles Darwin, 1809

# God created the world in 7 days

**Day1:God created day and night**

**Day2:Sky and ocean**

**Day3:Dry land**

**Day4:The sun, moon and stars**

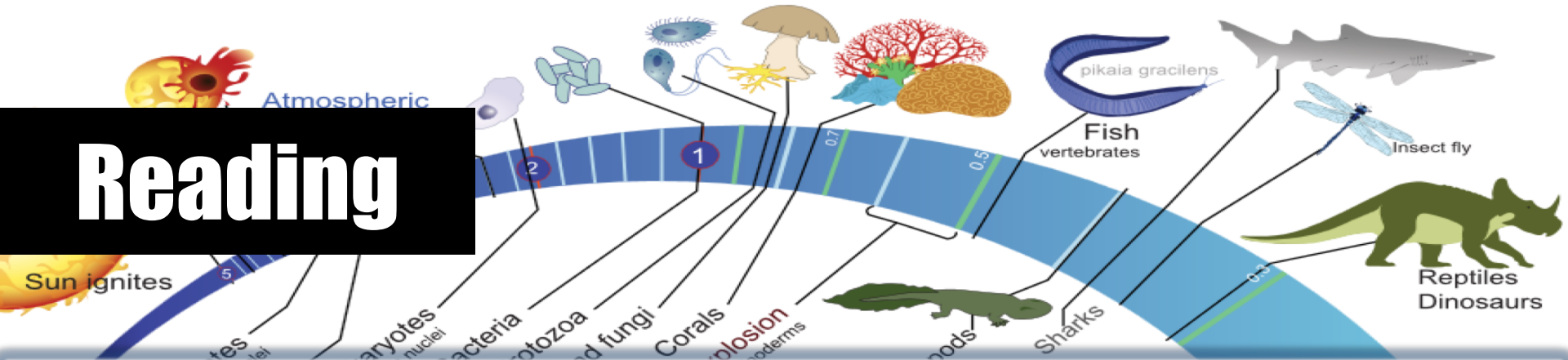
**Day5:Creatures in the air and sea**

**Day6:Land animals and man**

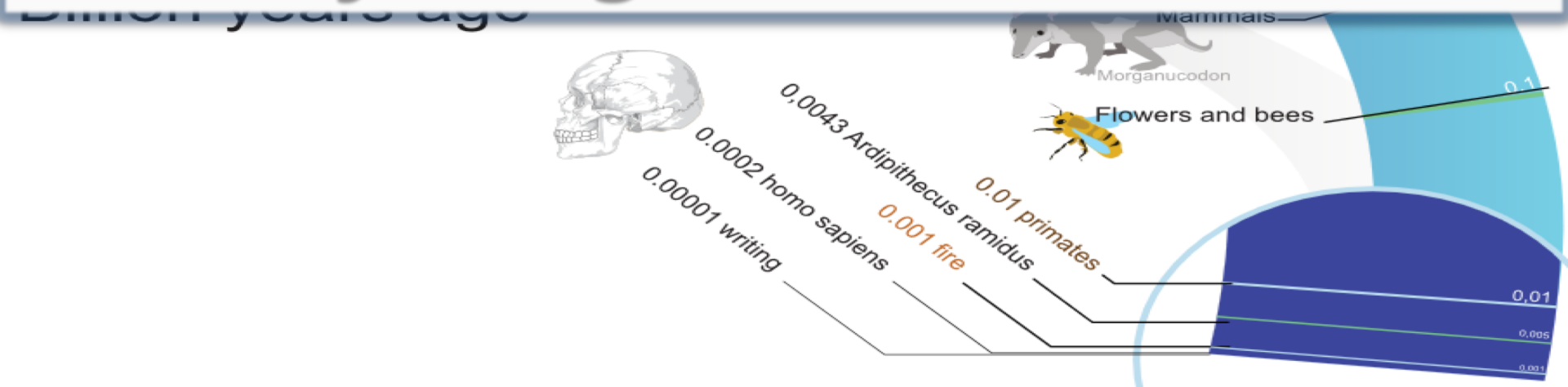
**Day7:God had a rest**



# Reading



# How Life Began on the Earth





***Fast Reading***

# Careful Reading



## Task 1 (para.1)

What is the widely accepted theory in Para 1?

The universe began with a “Big Bang” that threw matters...

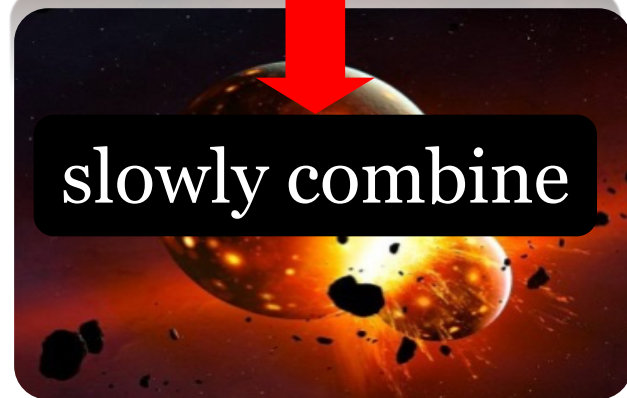
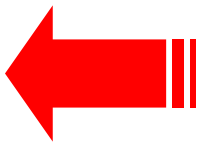
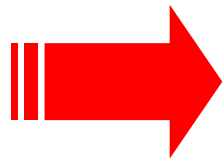


**the BIG BANG THEORY**

The text 'the BIG BANG THEORY' is displayed in a large, bold, sans-serif font. 'the' is in a smaller, lowercase font, while 'BIG BANG THEORY' is in a much larger, uppercase font. The word 'BIG' is colored red, and 'BANG THEORY' is colored black. A red atom icon is positioned behind the word 'BIG'.

# Task 2 (para.2)

How did the earth come into being(产生) ?



# Task 2 (para.2)



it exploded loudly with rock  
and fire



the earth's  
atmosphere



the earth  
cooled down



water appeared

# Task 3 (para.3)



WATER.

The Source of Life

# Task 4 How did life develop after water appeared?

(para.4)

The first extremely small plants on the surface of the water produced O<sub>2</sub>.



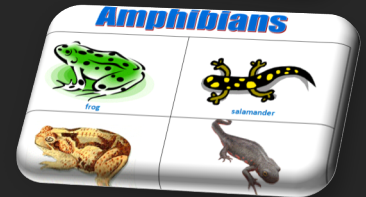
Early shellfish and all sorts of fish appeared.

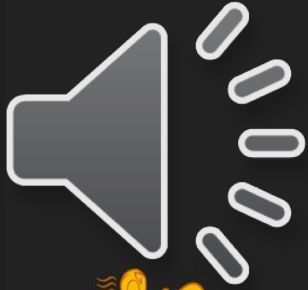


Green plants began to grow on land.



Followed by land animals, some were insects. Others, called amphibians





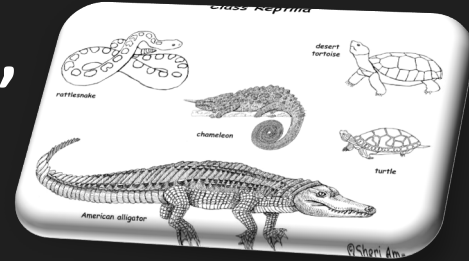
When the plants grew into forests, reptiles appeared.



After that, some huge animals called dinosaurs developed.



The disappearance of dinosaurs made possible the rise of mammals on the earth.



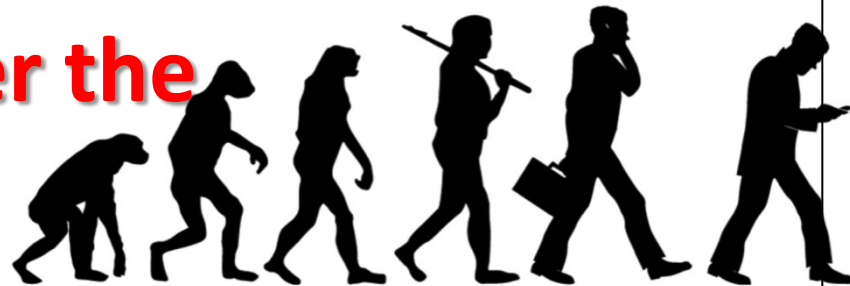
# Task 5 (para.5) Q&A

1. What were those clever animals with hands and feet? **Human beings**

2. What have they done to the earth?

What problem are humans causing?

**They are not looking after the earth very well.**



A close-up photograph of a person's face, where the skin is painted with a world map. The person has striking green eyes and is looking directly at the camera. The map is rendered in shades of blue, green, and brown, with the continents clearly visible. The overall mood is contemplative and focused on environmental awareness.

***What little things can we do for our  
Mother Earth?***



**KEEP  
CALM  
AND  
SAVE  
ENERGY**



**KEEP  
CALM  
AND  
PROTECT THE  
ENVIRONMENT**

# Summary

Before we left

As we left the earth

when I was in space

when I was on the moon

The

returning

# Summary

After the “big bang” , the earth was still just a cloud of dust, it exploded loudly with fire and rock, which were in time to produce the carbon, water vapour and other gases. Then water began to appeared on the earth. The small plants in water are considered to be the earliest lives on the earth. The  $O_2$  they supplied encouraged the lives of shell- -fish and fish. Slowly green plants grew on land, which were followed by land animals like insects & amphibians. When the plants grew into forests, reptiles appeared. Then dinosaurs developed but disappeared later, which made the rise of a totally different animal, mammal, possible, and finally humans spread all over the world.

# The History of the earth

优酷

# Homework

What message can you get from : As a result of this, many scientists believe the earth may become too hot to live on. So whether life will continue on the earth for millions of years to come will depend on whether this problem can be solved.?

Can you write something to solve this problem?

